



U.S. Army Dugway Proving Ground Mission & Capabilities Overview

Mission

U.S. Army Dugway Proving Ground executes efficient testing and support to enable our nation's defenders to counter chemical, biological, radiological, and explosives (CBRE) hazards.



★ COMMAND VISION ★



PEOPLE:

Everything we do at Dugway starts and ends with people. Without you, we cannot accomplish our mission.



MISSION FOCUS:

Dugway exists to accomplish a mission. Focus your efforts On that mission to ensure our success.



WORKING TOGETHER, MOVING FORWARD:

We accomplish our mission when we work together. All of us must contribute to the team to ensure Dugway is ready To meet the challenges of the future.

Empowering the Nation's Defenders

BLUF: Test Tube to Battlefield

Dugway Proving Ground is responsible for testing and evaluating nearly all Department of Defense (DoD) chemical and biological defense capabilities including protective gear, detectors and decontamination systems. In addition, Dugway supports critical U.S. Army and DoD activities, including military training, smoke and obscurants testing, and the development, testing and integration of unmanned aircraft systems.

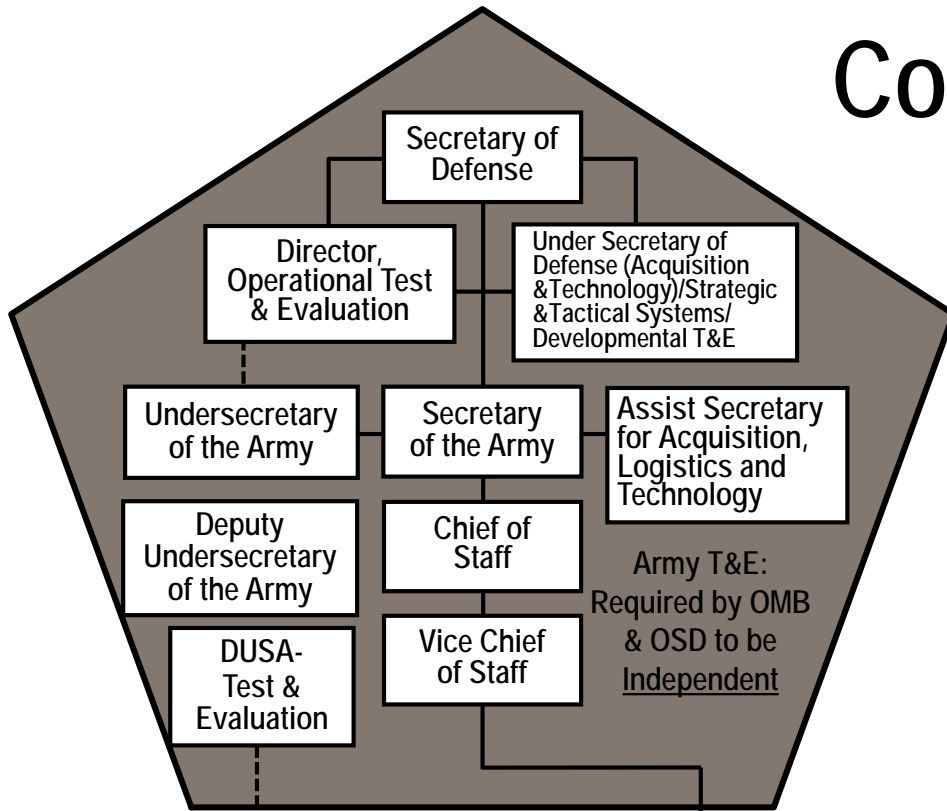


**Chem Testing &
Evaluation**

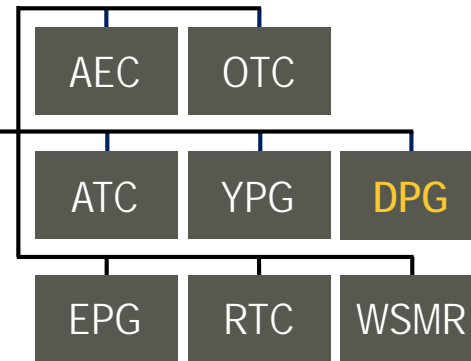
**Bio Testing &
Evaluation**

**CWMD
Support**

Command Structure



U.S. Army Test and Evaluation Command (ATEC)
 BG James J. Gallivan



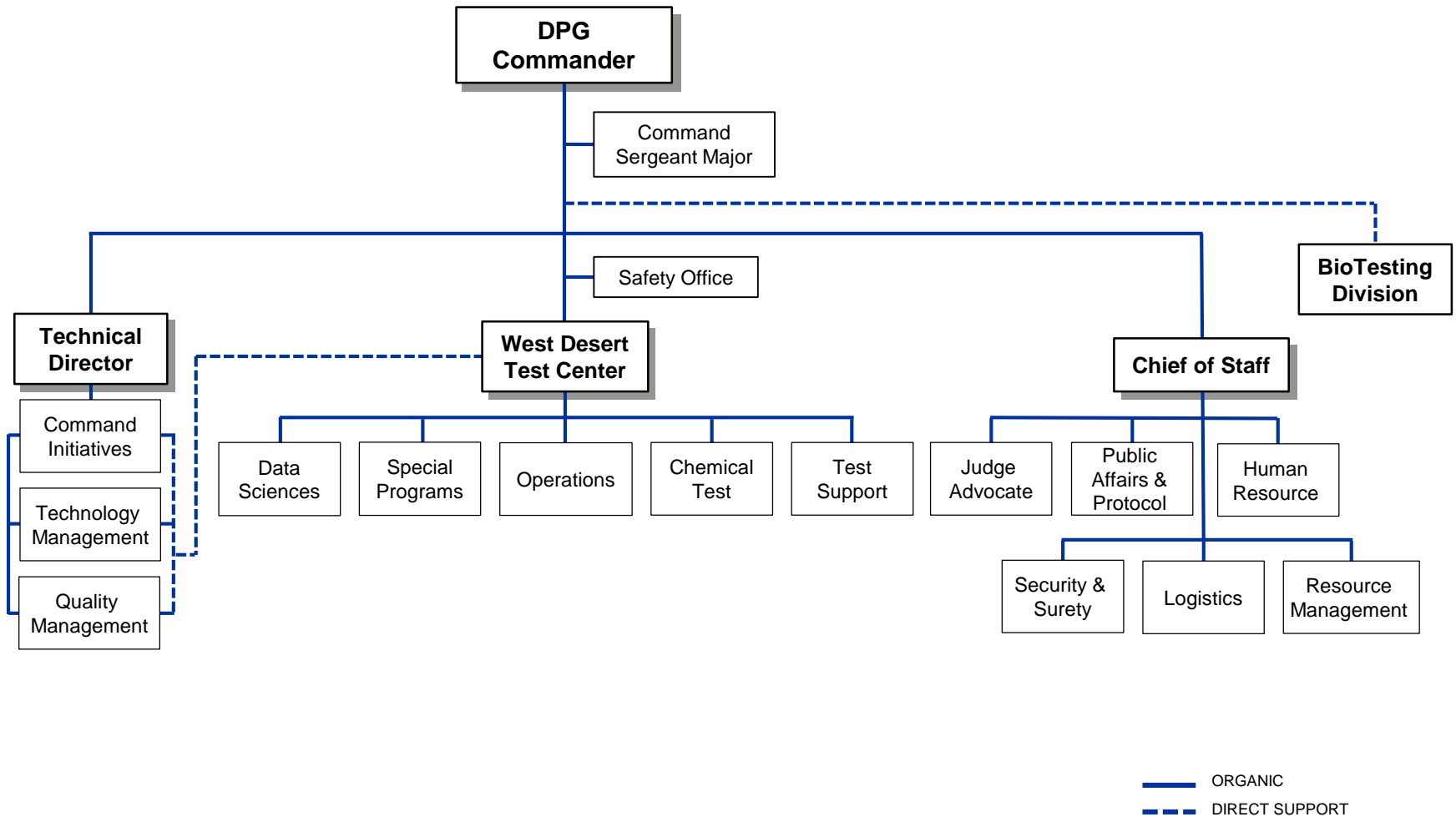
- AEC – Army Evaluation Center
- ATC – Aberdeen Test Center
- EPG – Electronic Proving Ground
- RTC – Redstone Test Center
- OMB – Office of Management and Budget
- OSD – Office of the Secretary of Defense
- OTC – Operational Test Command
- WSMR – White Sands Missile Range
- YPG – Yuma Proving Ground

Team Dugway



- AAFES – Army/Air Force Exchange Service
- BTD – BioTesting Division
- DECA – Defense Commissary Agency
- DHA – Defense Health Agency
- IHG – InterContinental Hotels Group
- IMCOM – Installation Management Command
- LRC – Logistics Readiness Center
- MICC – Mission & Installation Contracting Command
- NEC – Network Enterprise Center
- RIAC – Rapid Integration Acceptance Center
- TMDE – Test, Measurement, and Diagnostic Equipment
- UTNG – Utah National Guard
- UTTR – Utah Test and Training Range
- WDTC – West Desert Test Center

DPG Mission Organization



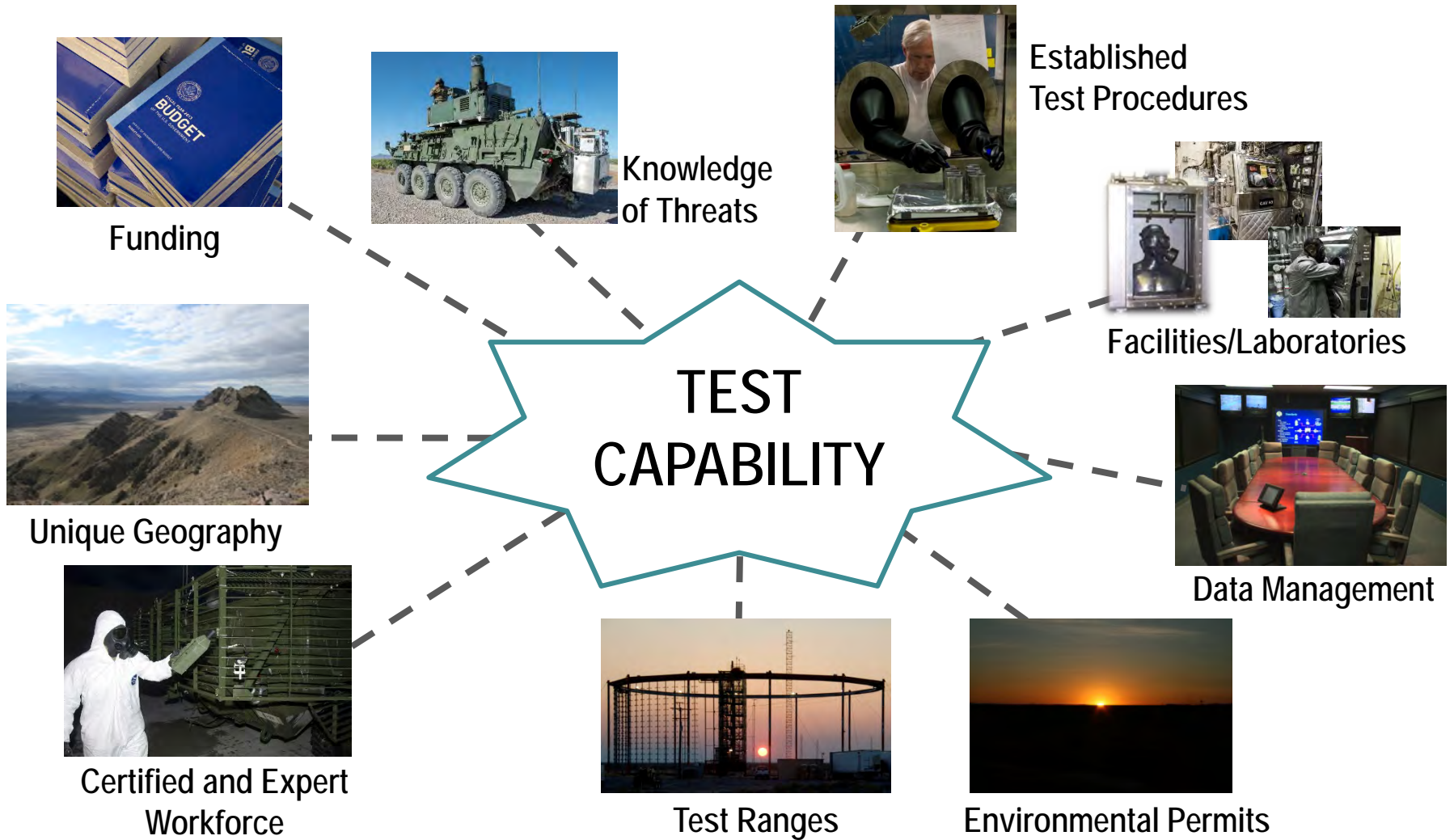
Team Dugway – working together to execute the mission and care for people

Major Range and Test Facility Base (MRTFB)

Dugway Proving Ground's West Desert Test Center (DPG-WDTC) has been designated as a Major Range and Test Facility Base (MRTFB), and therefore is regarded as a national asset, operated and maintained primarily for DoD test and evaluation missions.



A National Treasure



DPG is the sole converging point for comprehensive CBRN capabilities within OSD

Location & Airspace

Freedom to Test and Train

Dugway is Remote:

- Free from urban encroachment
- Acoustically and electronically quiet
- Free of light pollution
- Salt flats extending 90 miles north
- Surrounded on three sides by mountains and desert terrain

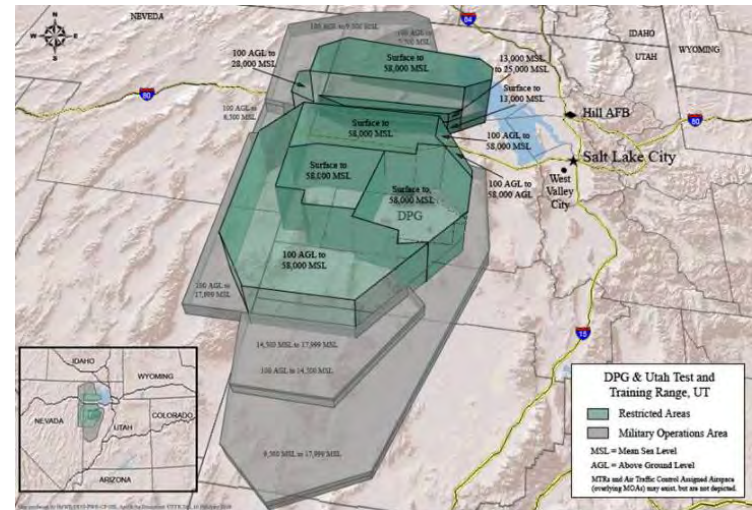
Dugway is:

- 80 miles from Salt Lake International Airport
- 40 miles from Tooele, closest major city
- Roughly the same size as Rhode Island



Total Area	1,252 miles ²
Mountain Terrain	92 miles ²
Mixed Desert Terrain	437 miles ²
Playa (flats)	722 miles ²

DPG is partnered with the Utah Test & Training Range



Total Airspace Footprint	16,797 miles ²
Restricted Airspace	7,954 miles ²
Military Operations Area	10,004 miles ²
DOD Exclusive-use Land	3,078 miles ²
Government-owned Land	16,686 miles ²

Remote and Isolated

Dugway Details:

- Located in Utah's remote West Desert
- 40 miles from closest services
- Surrounded by rural, ranch land with free range cattle

Quality of Life Issues:

- Contractors' child care rates have tripled
- Loss of services and facilities (bowling alley, rock, wood and auto shops, golf course)
- Annual 8-12% housing rent increase
- Few incentives to live at Dugway
- Families will move due to continued rent and service cost increases

Workforce Impacts:

- Cascading negative effects from reduction in services
- Average commute is 1-2 hours, one way
- Recruiting and retention
- Impacts to Service Members



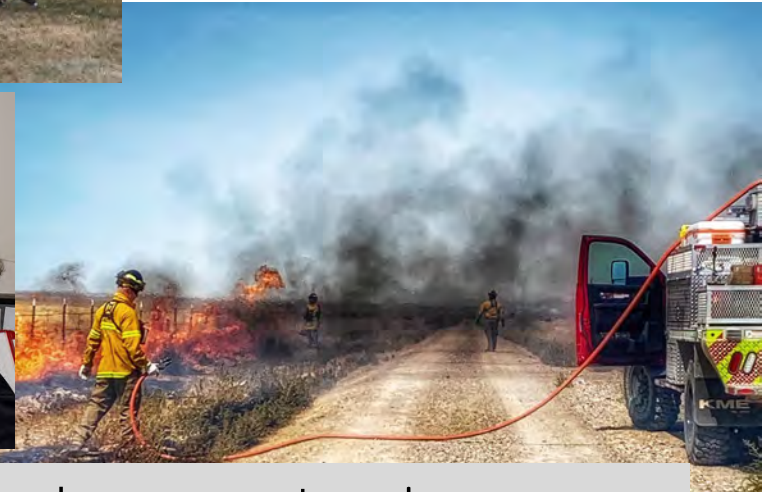
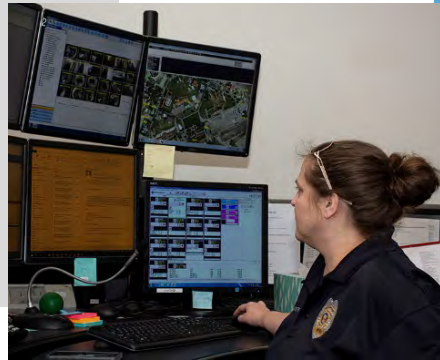
Supports mission execution – but at a higher price

USAG Dugway Proving Ground



Dugway Garrison

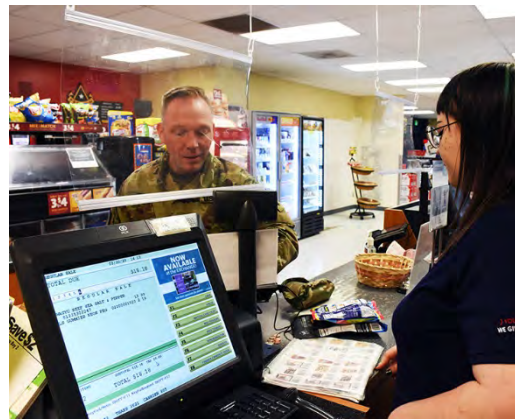
- Directorate of Public Works
- Directorate of Operations
- Directorate of Human Resources
- Directorate of Resource Management
- Family, Morale, Welfare, and Recreation
- Plans, Analysis and Integration Office
- Equal Employment Opportunity
- Religious Support Services
- Information Management
- Safety
- Legal



MISSION STATEMENT: USAG DPG provides effective base support services, enabling global mission readiness and a resilient community

Dugway Community

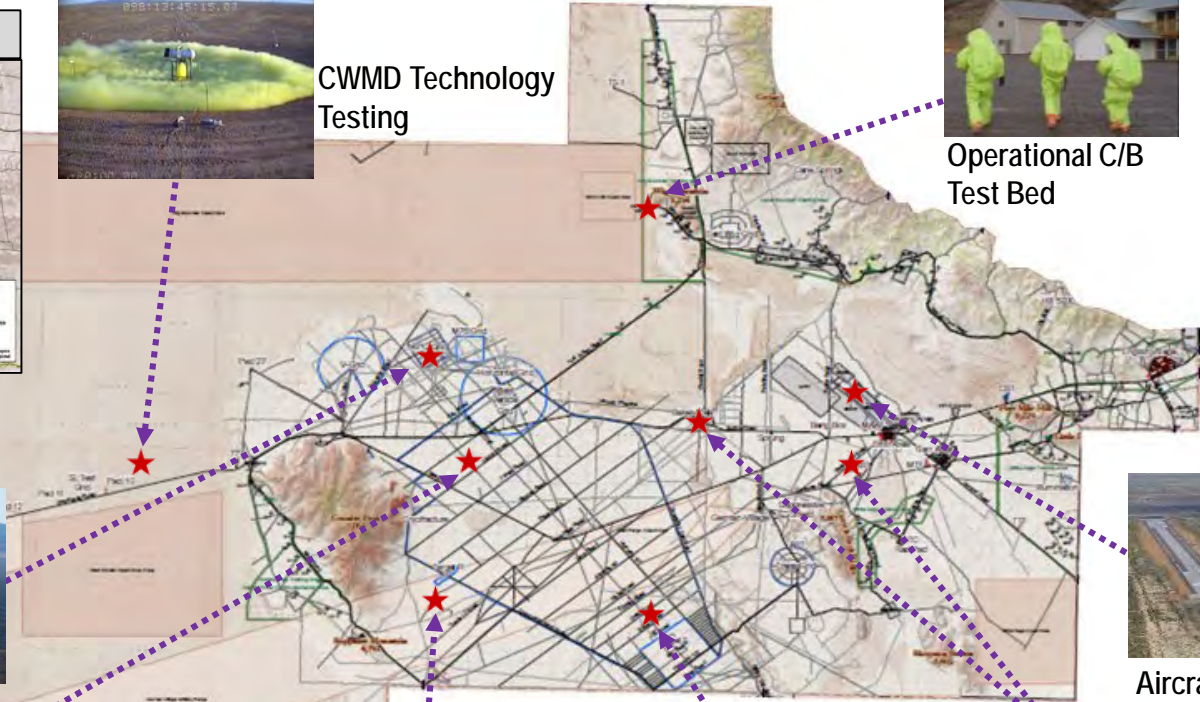
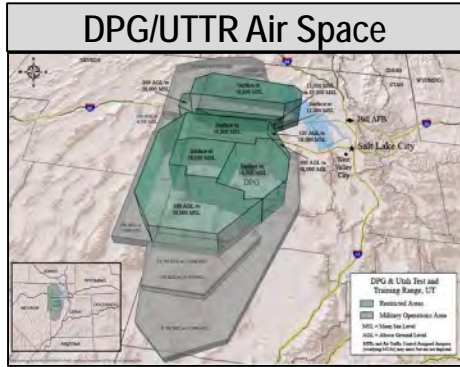
- On-Post Housing for Families and Individuals
- Visitor Lodging at Desert Lodge
- Occupational Health Clinic
- Commissary and Gas Station
- Dugway School: K-12
- Comprehensive Family and MWR Programs
 - Army Community Service (ACS)
 - Child and Youth Services (CYS)
 - Fitness Center with Outdoor Pool
 - Sports and Fitness Programs
 - Outdoor Recreation
 - Community Club & Ditto Diner
 - Library
 - RV Park and Storage
 - Leisure Travel
 - Community Special Events



Dugway, A Great Place to Work, Live and Play!

WDTC & BTD MRTFB

OPERATIONALLY REALISTIC CHEM/BIO TESTING:
1,252 sq. miles, permits, instrumentation, expertise



A unique convergence of location, geography, SMEs, permits, air space and capabilities

Operations Support & Concept Development



WMD Chemical Production
Demonstration Training Site



BioField Dissemination Course

Intelligence Community Support

- C/B courses tailored specifically for intelligence analysts
- Aid analysts in recognition of materials, equipment and procedures required in C/B warfare programs

Premier location in the country for C/B training

USSOCOM Support

- Provide scientific chemical and biological course work to assist units in developing non-materiel solutions for C/B operations
- Provide multi-spectrum threat representative C/B scenarios, STXs and FTXs



Bio Agent Simulant Sampling



Breaching Simulated Lab



HME Burn Test



EOD WMD Bio Agent Training

EOD Support (USA, USN, USMC)

- Provide scientific chemical, biological, and Homemade Explosive(HME) course work to assist units in recognition and handling threat relevant materials for pre-deployment preparation
- Team members are required to attend DPG courses to maintain deploy ability status

National Guard Bureau

- Provide advanced C/B courses and practical exercises to aide in the refinement and validation of units tactics, techniques, and procedures.
- Courses and exercises focused on production, detection, sampling, decontamination, and dissemination signature recognition
- Allies & Partners



Chem Production Training

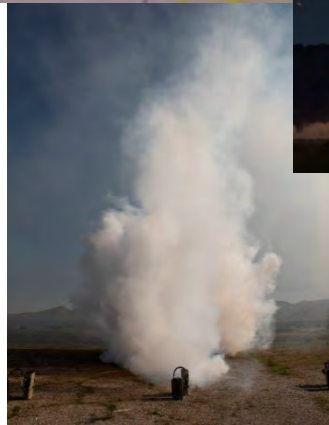


WMD Agent Sampling

Unique capabilities support CWMD efforts globally - "Build to test, use to train"

Significant Accomplishments

- NBCRV On-the-Move Chemical Surface Detector
- Multi-Phase and Aerosol Vapor chemical agent detectors (MPCAD and AVCAD)
- CENTAUR (Capabilities to Enable Threat Awareness, Understanding & Response)
- Test Grid Instrumentation System Upgrade
- Aircraft & Vehicle Contamination Study
- INTACT (International Novel Threat Agent Characterization) testing
- Jackrabbit – large scale outdoor toxic industrial chemical (TIC) release
- Smoke & Obscurant testing
- COMET (Cryogenic Oxygen-Methane Explosion Test)
- Unmanned Aerial System (UAS) test support



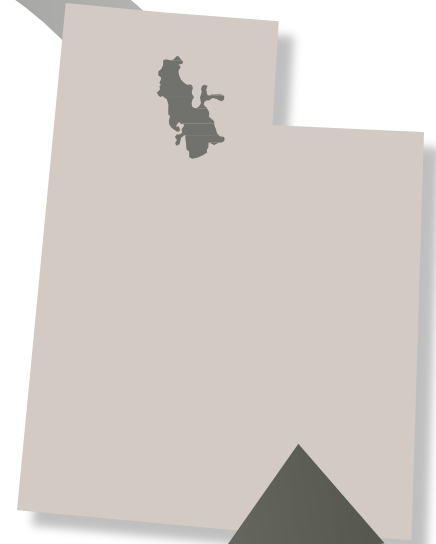
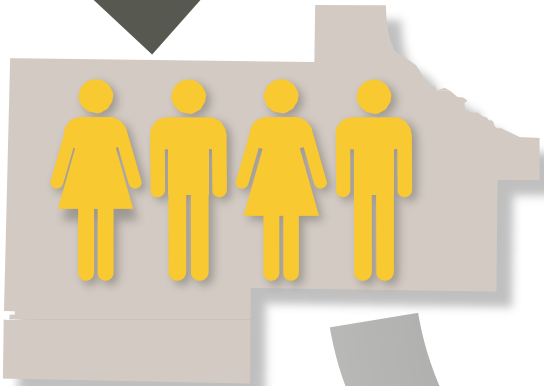
Workforce & Direct Economic Impact

Total Military/DA Civilians <small>ATEC, IMCOM, Appropriated Funds, Non-appropriated Funds</small>	486
DoD Tenants <small>MICC, MEDCOM, NEC, RIAC, UTTR, TMDE, BTB, CPAC, LRC</small>	622
Other Tenants <small>Army/AF Contractors, AAFES, IHG, USPS, Schools, CU</small>	784
DPG Residents <small>Spouses and Dependents only</small>	228
Total Employees and Residents	<u>2120</u>
Transients/Customers <small>Military/Civilian combined on any given test day</small>	50-1500

DPG supports nearly 2,500 jobs and contributes \$225M to Utah's economy

Category	Total
Jobs	2,479
Earnings	\$175.9M
Gross Domestic Product	\$225M

Source: Kem C. Gardner Policy Institute analysis using the REMI PI+ model





Purpose: Posture DPG to fulfill mission requirements in the year 2040 and beyond

Key Aspects:

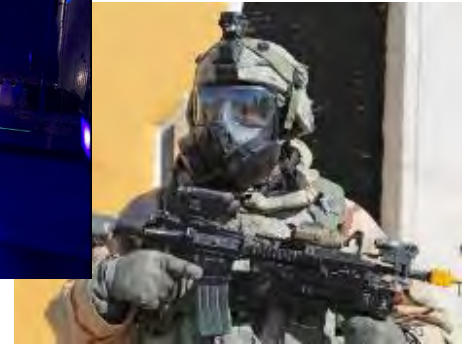
- **Threat Informed and Customer Based** – Adversaries continue to develop new and more dangerous technologies; DPG develops test and evaluation capabilities to stay ahead of threats and meet customer requirements
- **Mission and Readiness Focused** – Enhances readiness by providing top quality and timely testing and world-class training capabilities
- **Sustainable** – Enterprise must be able to sustain capabilities over time
- **Workforce Development** – A proactive plan to build and maintain a diverse, highly skilled team
- **Holistic** – Addresses mission and mission support capabilities

Endstate: DPG postured with the facilities, workforce, mission and mission support facilities to meet customer requirements and enhance warfighter readiness

The Future

Test Capabilities Improvements

- Nontraditional (NTAs) and Pharmaceutical Based Agents (PBAs) / Fetanyls
- Modular Test Capabilities
- NBCRV On-the-Move CSD
- Near Real-time Swatch, Seam & Closures Test Fixture
- Additional MIL-STD-810 Chambers
- Wireless Test Grid/OADMS



Infrastructure Improvements

- DPG 2040 planning ongoing
- Replacement of air-handling for chem labs
- Additional 2 MW Solar Field

Test and Training Events

- TECFT
- MPCAD, AVCAD, PCAD, CVCAD
- Desert Ice
- UIPE-FOS



Empowering the Nation's Defenders!



Supporting the Soldier



Quality of life



Vast remote areas for testing and training



Positioned for future growth



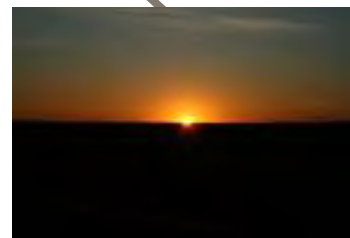
Expert, Army Acquisition-certified workforce



Infrastructure in place with state-of-the-art equipment



Supporting DOD transformation



Environmental permits



On-site airfield

TEAM DUGWAY – Empowering the Nation’s Defenders

COL Scott D. Gould
Commander, Dugway Proving Ground
5450 Doolittle Ave
Dugway Proving Ground, UT 84022

CSM Mauvet M. Rawls
Installation Command Sergeant Major
5450 Doolittle Ave
Dugway Proving Ground, UT 84022

Follow Us and Share Our Vision



dugway.army.mil



twitter.com/USArmyDPG



facebook.com/USArmyDPG



youtube.com/c/DugwayProvingGround



instagram.com/USArmy_DPG